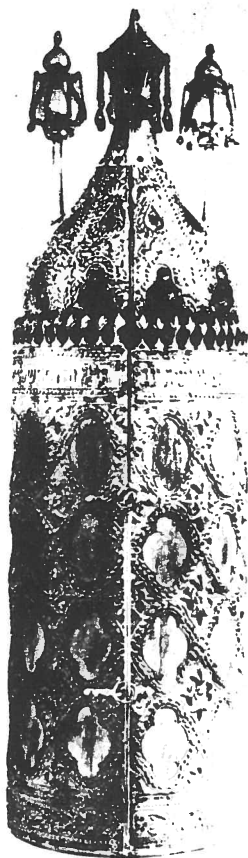


Hence the ark and the shulchan, with the cover where the torah is read are buried. Since many arks are very very large and cannot be buried it may be necessary to dismantle them prior to burial. Those parts of the aron and shulchan on which the sifrei torah actually rested should be buried intact. It is noteworthy that in recent years many Torah scrolls and arks of European synagogues have been transferred to Israel and distributed to many communities where there is a need for them.

As for the pews, most rabbis agree that they can be taken by the Sanitation Department. The plaques on the wall assume no sanctity and need not be disposed of in any special fashion.

Since this area has many intricate details each case should be discussed with a competent rabbi.



The Torah Chest