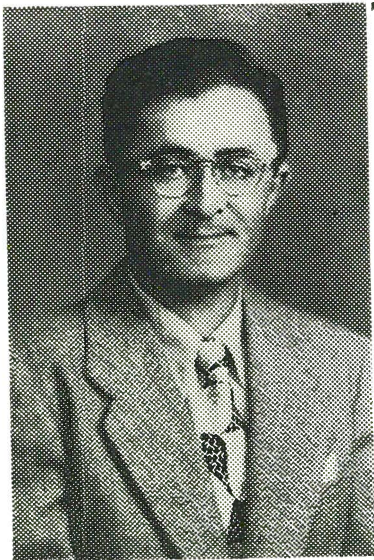


## SERVICE TO ADULT ORGANIZATIONS AND TO THE COMMUNITY AT LARGE

The Bureau, through its director and extension director, serves adult organizations, congregations and the community at large in the following areas:

**PROGRAMMING, CONSULTATION AND SPEAKERS' BUREAU.** As in the case of youth groups.



MORRIS H. STRASSBERG, the Bureau's director of extension activities.

**LECTURES, PANEL DISCUSSIONS, AND LECTURE DISCUSSION SERIES.** These are arranged by the Bureau for various organizations. Outstanding among past series were: "Aspects of Child Psychology"—a series of five weekly lecture-discussions in cooperation with the Parent-Teacher Association of the Bureau Nursery School (1947); "Blueprints for American Jewry"—a series of five weekly lecture-discussions, for the Avondale Synagog (1948); and "Youth at the Service of Our People," consisting of four lectures, for the Ohav Shalom Congregation (1949).

Lecture series in Yiddish are also arranged every year by the Bureau jointly with Yiddish speaking groups.

**THE JEWISH CULTURE AND ART SERIES.** Under the joint sponsorship of the Bureau of Jewish Education and the Jewish Center, a community-wide Jewish Culture and Art Committee has been formed for the purpose of bringing to this community Jewish speakers and artists of high merit. Thus, for 1950, the following programs have been scheduled: a lecture, "The Psychological Effects of Israel's Statehood on the American Jewish Community," by Dr. Henry Raphael Gold; a dance recital by Noami

Aleh-Leaf, in conjunction with the Fifth Annual Music Festival; and a symposium, "Tomorrow's Judaism," by Rabbis Rackman, Sandrow and Eichhorn.

Rabbi Fishel J. Goldfeder is chairman, and Mrs. Ben Bernstein is secretary, of the Jewish Culture and Art Committee.

**THE BUREAU ADULT SCHOOL.** Formal courses in Hebrew, Jewish History, Literature and Contemporary Problems are being offered to adults at the Bureau. In addition, classes, study-circles, and discussion groups are arranged by the Bureau for organizations at the convenience of the latter as to place and time.

**THE JEWISH MUSIC FESTIVAL.** Under the joint auspices of the Bureau of Jewish Education and the Jewish Center, an annual Jewish Music Festival is held in observance of Jewish Music Month. It usually utilizes outstanding community talent and presents vocal, choral and orchestral performances of artistic merit and distinctly Jewish appeal.

The Annual Jewish Music Festival, instituted in 1946, has been enthusiastically received by the entire community.

**THE BUREAU CHORAL SOCIETY.** Under the able leadership of Cantor Emil Rosen, the Bureau Choral Society of approximately fifty voices has given a series of highly creditable performances. It participates in the annual Jewish Music Festival.