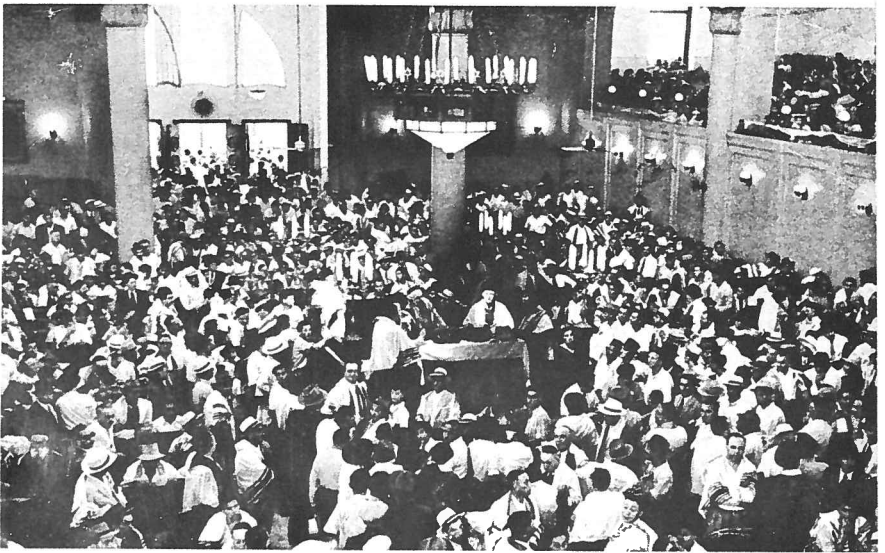


Just as the mechitzas vary in height so too do they vary in location. Some are elevated on a balcony and are three sided. This gallery is symbolic of the women's gallery in the Beis Hamikdosh which was three sided. In most synagogues the women's section is alongside or in back of the men's section, with wooden partitions and curtains separating the two. In some synagogues the upper part of the partition is carved out with various designs and tiny holes. If the holes are large enough for a hand to get through the mechitza is invalidated. Glass mechitzas which are transparent on one side for the women but opaque on the men's side have been introduced in some areas.



Mechitza With Holes at the Top