

# MILESTONES: 1925 = 1950\*

## IN THE BEGINNING

During the first quarter of the present century, Jewish education facilities in Cincinnati consisted, on the one hand, of the Talmud Torah, which had been organized in 1887, and on the other, of several congregational schools.

In the early twenties, the United Jewish Social Agencies had begun to make strenuous efforts to arouse mutual interest of the orthodox and reform elements in each other's work.

When the educational situation of the Jewish community seemed serious, The United Jewish Social Agencies appointed a committee to confer with the "Talmud Torah Society." Neither felt that it was well enough posted in educational matters to make an expert analysis of the educational needs of the Jewish community or provisions for the reorganization of its educational system.

## THE FIRST STEP: A SURVEY

Consequently, in 1924, Louis Hurwich, director of the Jewish school system of Boston, was called in to make a survey and to recommend an educational set-up that would best fit the needs of the community.

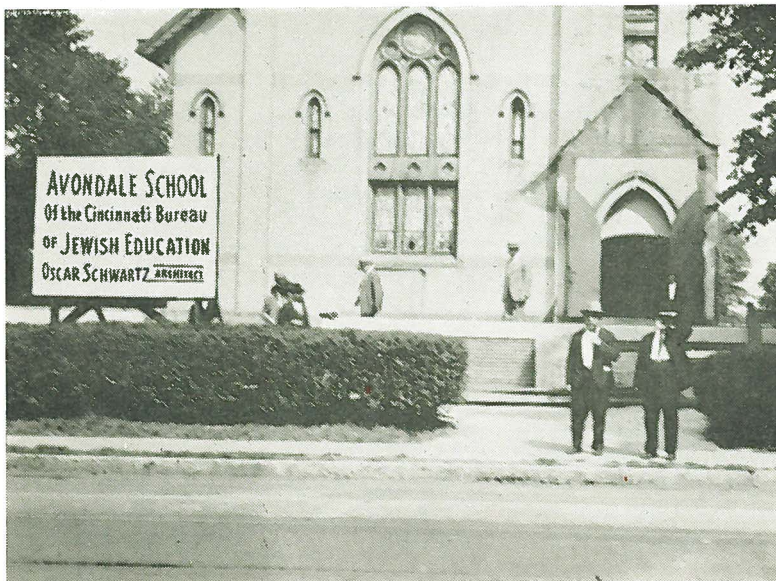
After a careful study, Mr. Hurwich recommended that a Bureau of Jewish Education be founded, to which the Talmud Torah should turn over its activities and to which all the orthodox schools in the city should look for guidance. The plans included the formation of a Board of Delegates representing the various important Jewish organizations of the city. This Board was to elect an Executive Committee to administer the affairs of the Bureau.

## BUREAU FORMED

On January 13, 1925, Articles of Incorporation of the Bureau of Jewish Education of Cincinnati were filed with the State of Ohio, and on January 15, 1925, a constitution was adopted.

\*The first part of this account, dealing with the early history of the Bureau of Jewish Education of Cincinnati, is based on data gathered by Dr. Barnett R. Brickner and presented in an article, "The Talmud Torah: 1887-1937" by Dr. Azriel L. Eisenberg, published in 1937 in the *American Israelite* and in *Every Friday*.

## BEFORE



Old Adath Israel Building in 1926